



A Vertical Green Village

INNOVATIVE DESIGN AWARD

TO-BE-BUILT MIXED DEVELOPMENT

Heart of Yew Tee

Project Overview

Heart of Yew Tee is a development that realises HDB's "Designing for Life" focus on the holistic well-being of its residents. Future residents can live well, live green and live connected all at the same time in one location, as the development integrates commercial, food, health care, social and communal programmes with housing for the elderly. Amenities such as a polyclinic, kidney dialysis centre, hawker centre, community club, communal spaces and garden decks will also be co-located in a lushly landscaped setting.

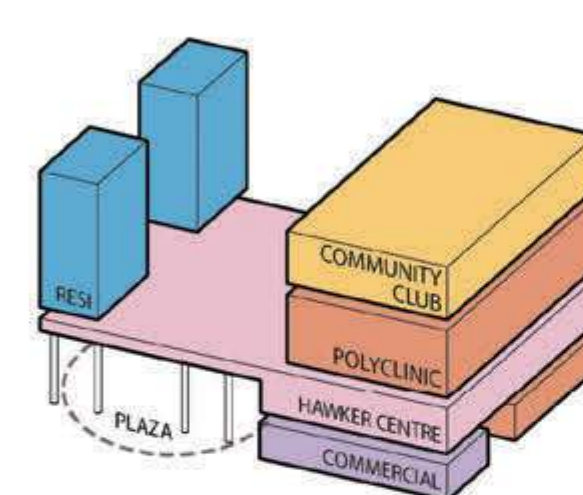
Through sensible space planning, as well as distinctive architectural massing and form, the development is designed to accommodate a myriad of facilities all within a single site, for residents' convenience.



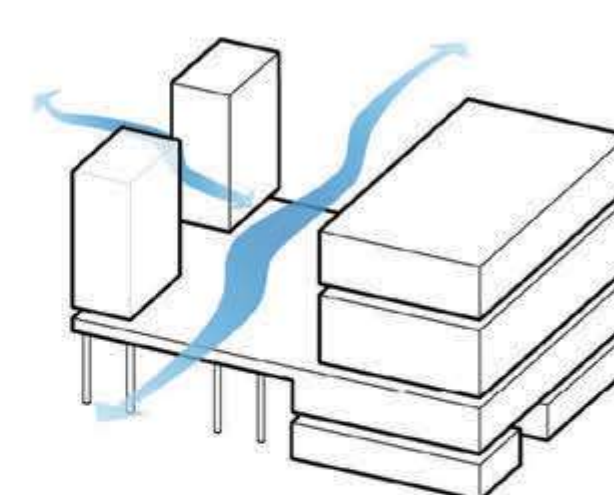
Living Well – Of Heart & Soul – An integrated development that brings thoughtful & high-quality living, together with community and healthcare amenities in an inclusive and vibrant setting



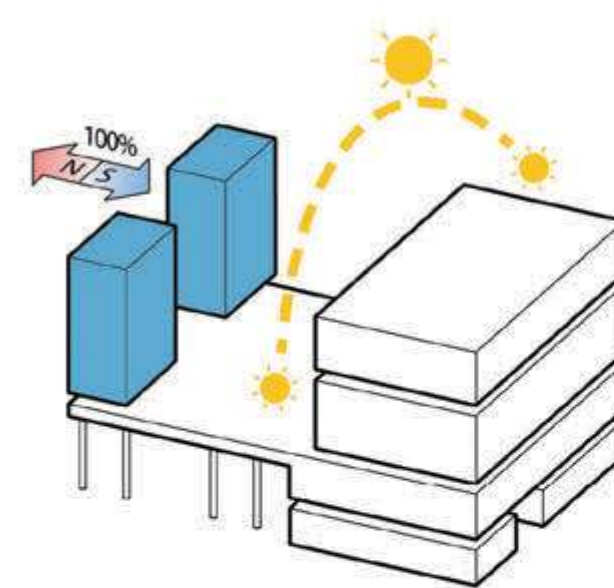
KEY DESIGN MOVES: A Composition of Forms that gives Clarity, Porosity, Good Orientation & Opportunities for Greenery



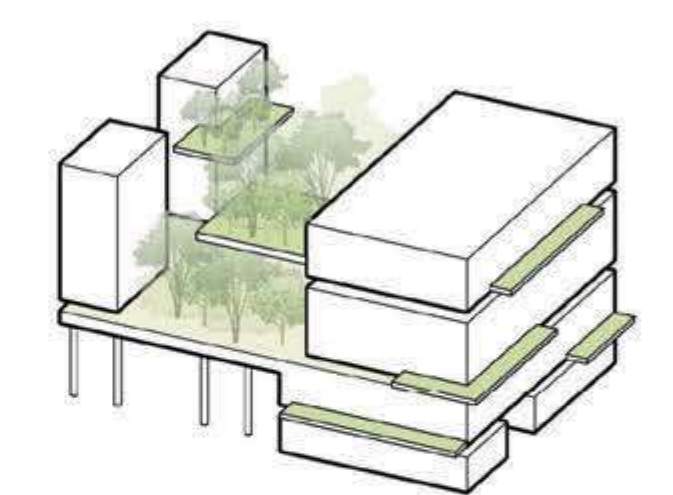
Clarity in Program Zoning
for ease of wayfinding



Porosity of Form
for ventilation, openness and sense of space

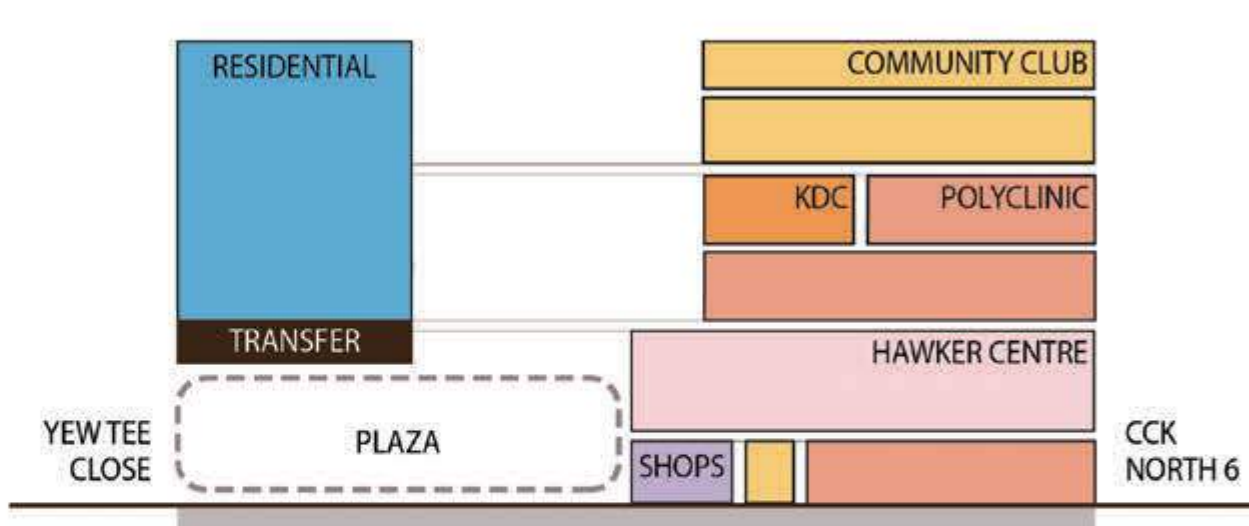


Optimal Orientation for Residential Blocks
(100% Units facing N-S)

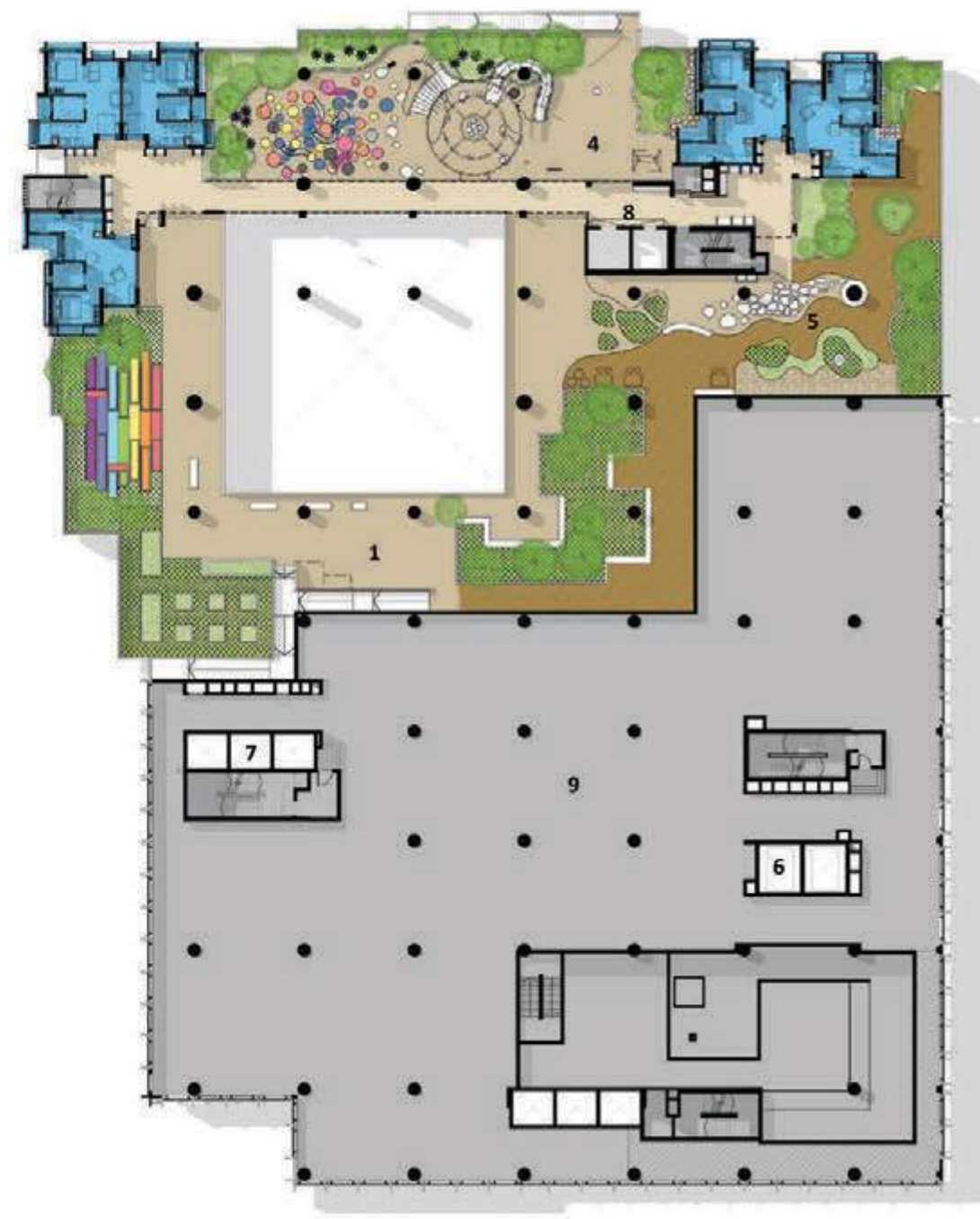


Infusion of Greenery
for wellness and healthy living

PROGRAMME DISTRIBUTION



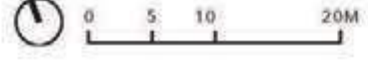
Programme Stacking
Through the big span structure at the Plaza and structural fit between different programmes, privacy between residential apartments and the community and healthcare amenities is achieved.



LEGEND

- 1. Landscape Deck
- 2. Community Garden
- 3. Flower Rainbow Garden
- 4. Playground
- 5. Therapy Garden
- 6. Service Lift
- 7. Common Lift
- 8. Residential Lift
- 9. Maintenance Slab

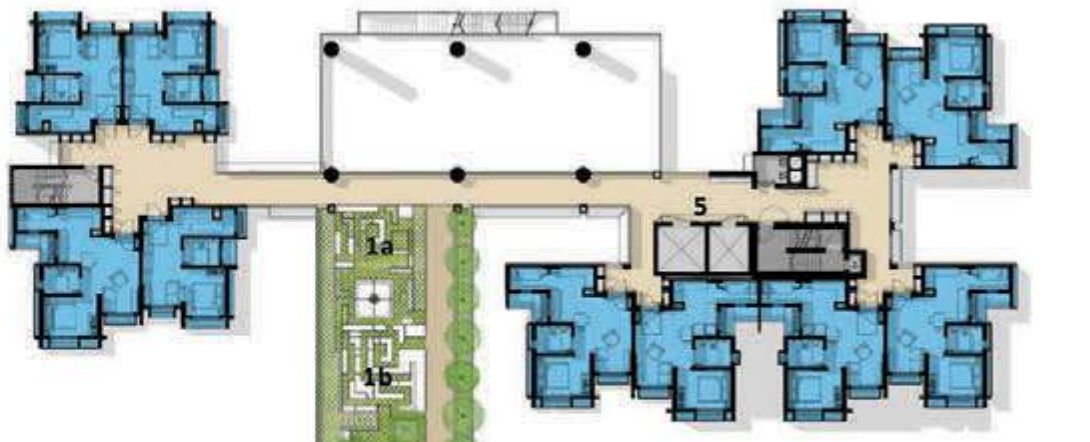
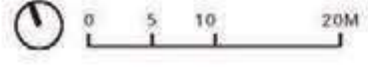
3RD STOREY PLAN



LEGEND

- 1. Fitness Deck
- 2. Landform Deck
- 3. Precinct Pavilion
- 4. Residential Garden
- 5. Kidney Dialysis Centre
- 6. Polyclinic
- 7. Service Lift
- 8. Common Lift
- 9. Residential Lift

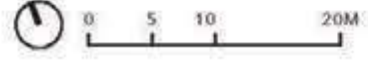
5TH STOREY PLAN



LEGEND

- 1. Club Deck
 - a. Raised Reflecting Pool
 - b. Artificial Turf Maze
 - c. Art Lawn
 - d. Landscape Interactive Element
- 2. Community Club
 - a. Mini Refreshment Area
 - b. Outdoor Refreshment Area
 - c. Multipurpose Room
 - d. Flexible-use Outdoor Area
 - e. Studio
- 3. Service Lift
- 4. Common Lift
- 5. Residential Lift

7TH STOREY PLAN



TYPICAL UNIT LAYOUT

100% N-S facing wide frontage to bedroom/livingroom is achieved with efficient layout.

Space next to the Kitchen of Type2 unit is designed to be flexible space convertible to care giver's room, dining space or extension of kitchen, etc.



2-Room Flexi (Type 1) Floor Plan



2-Room Flexi (Type 2) Floor Plan



2-Room Flexi (Type 2) Alternative



Living Well – Of Mind & Body – A beautiful lush and green environment that speaks of wellness, encourage active mobility and healthy living



▼ HDB Housing Block

▲ Garden Deck

▲ Garden Deck

▲ Garden Deck

▲ Playground

▲ Garden Deck

▲ Cafe

▲ Community Plaza

▲ Basement Carpark

▲ Hawker Centre

▲ Community Club

▲ Community Club

▲ Kidney Dialysis Centre

▲ Polyclinic

▲ Polyclinic

▲ Hawker Centre

▲ Hawker Centre

▲ Retail Pharmacy

▲ Polyclinic

▲ Basement Service Area